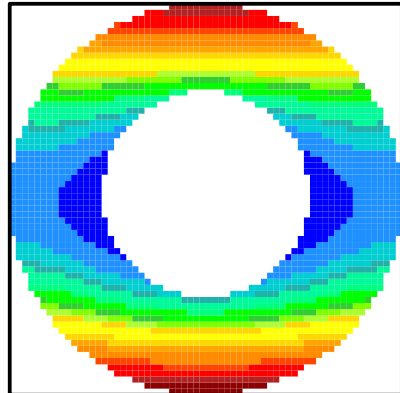
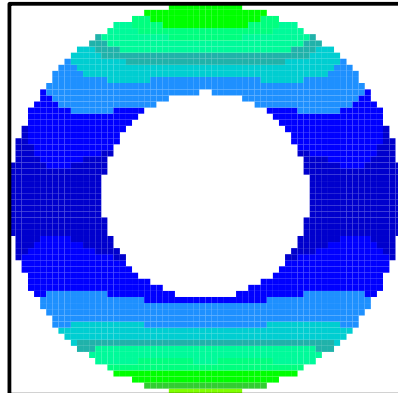


FULL FIELD=0.5deg



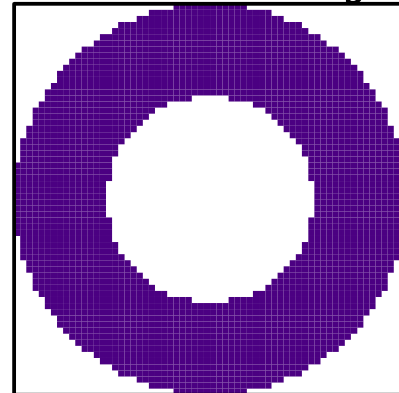
P-V 3.882 RMS 0.8805

0.7 FIELD=0.35deg

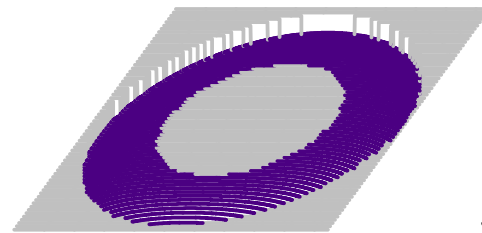
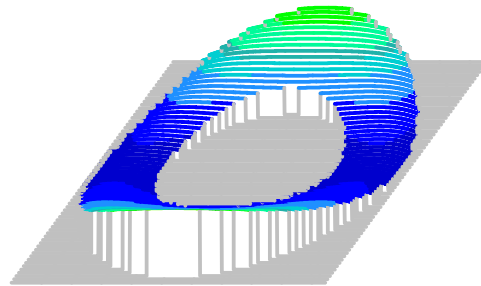
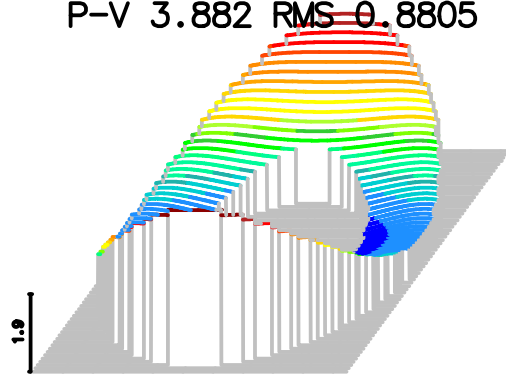


P-V 1.701 RMS 0.4048

ON-AXIS=0deg



P-V 0.4661 RMS 0.1332



Peak
3.882

Valley
-0.4661

WAVELENGTH 1 = 0.5876 μm
 P-V OPD 4.348 waves Min RMS
 3 Field Pts / 64 Aperture Div.

Cassegrain
 WAVEFRONT ANALYSIS

OSLO
 20 V 15
 08:32 AM