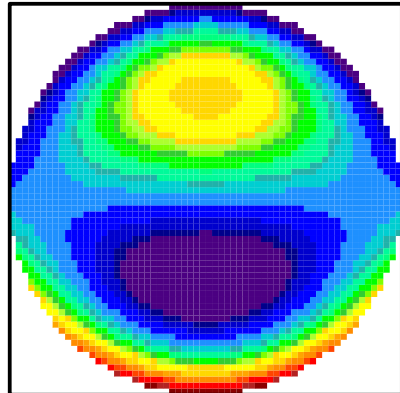
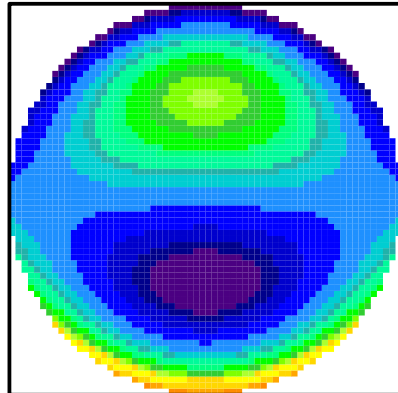


FULL FIELD=0.5deg



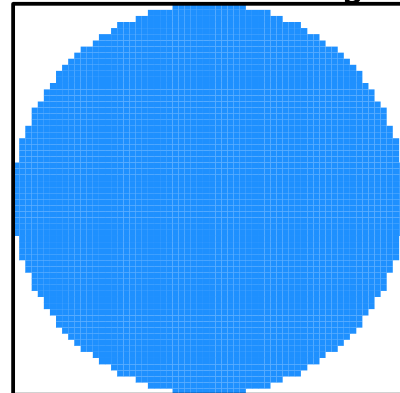
P-V 7.436 RMS 1.403

0.7 FIELD=0.35deg

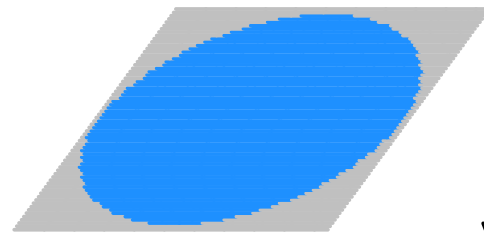
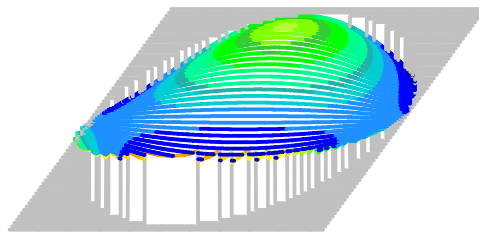
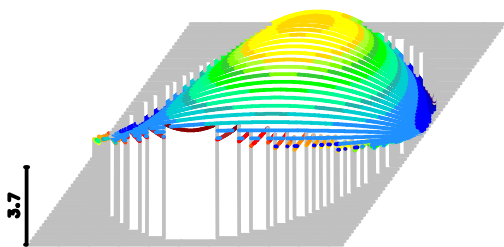


P-V 5.044 RMS 0.9514

ON-AXIS=0deg



P-V 3.096e-09 RMS 6.408e-10



WAVELENGTH 1 = 0.5876 μm
 P-V OPD 7.436 waves Min RMS
 3 Field Pts / 64 Aperture Div.

Newton
 WAVEFRONT ANALYSIS

OSLO
 20 V 15
 08:33 AM